

Jakarta, 12 Maret 2021  
 No : SPH/TMU/03/21/0124  
 Hal: Penawaran Harga

**PT. TOPSINDO MEGAH UTAMA**  
 Gedung Baja. Jl. P. Jayakarta No.55  
 Tower C, 3<sup>rd</sup> Floor, Unit C 03-01  
 Jakarta 10730 INDONESIA  
 Telp. (+62) 21 6230 4970  
 Fax. (+62) 21 6230 5917

**Kepada Yth:**  
**Direktur RS Mata Undaan**  
**Di Surabaya**

Dengan Hormat,

Berikut kami tawarkan alat-alat kesehatan mata **TOPCON-JAPAN** sebagai berikut :

No	Description	Type	Price List	Discount	Special Prices (Incl. PPN)
1	Slit Lamp LED System with 5 Magnification (Zeiss Type)	<b>SL-D4 LED System</b> Including : - AIT for SL-D4 - Table Top for SL-D4	314,487,500	110,070,625	224,858,563
2	Slit Lamp LED System with 5 Magnification with Camera Package (Zeiss Type)	<b>SL-D4 LED System</b> Including : - AIT for SL-D4 - Table Top for SL-D4 - Digital still camera unit DC-4 - All in One PC	572,395,500	200,338,425	409,262,783
3	Slit Lamp LED System with 5 Magnification (Haag-streit Type)	<b>SL-D701 LED System</b> Including : - AIT for SL-D701 - Table Top for SL-D701 - SL-D701 Adapt Cover for	492,310,500	172,308,675	352,002,008
4	Slit Lamp LED System with 5 Magnification with Camera Package (Haag-streit Type)	<b>SL-D701 LED System</b> Including : - AIT for SL-D701 - Table Top for SL-D701 - SL-D701 Adapt Cover for - Digital still camera unit DC-4 - All in One PC	750,218,500	262,576,475	536,406,228

Keterangan :

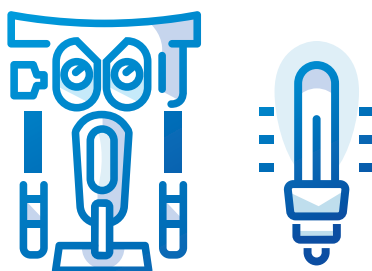
- Barang Inden 2 Bulan
- Sudah termasuk PPN 10%
- Warranty 1 Tahun (12 Bulan)
- Term of Payment : DP 40%, 40% saat pengiriman barang, 20% setelah install & uji fungsi
- **Penawaran berlaku 30 hari sejak diterbitkan**

Demikian penawaran dari kami, atas perhatiannya kami ucapkan terima kasih.

Hormat kami,

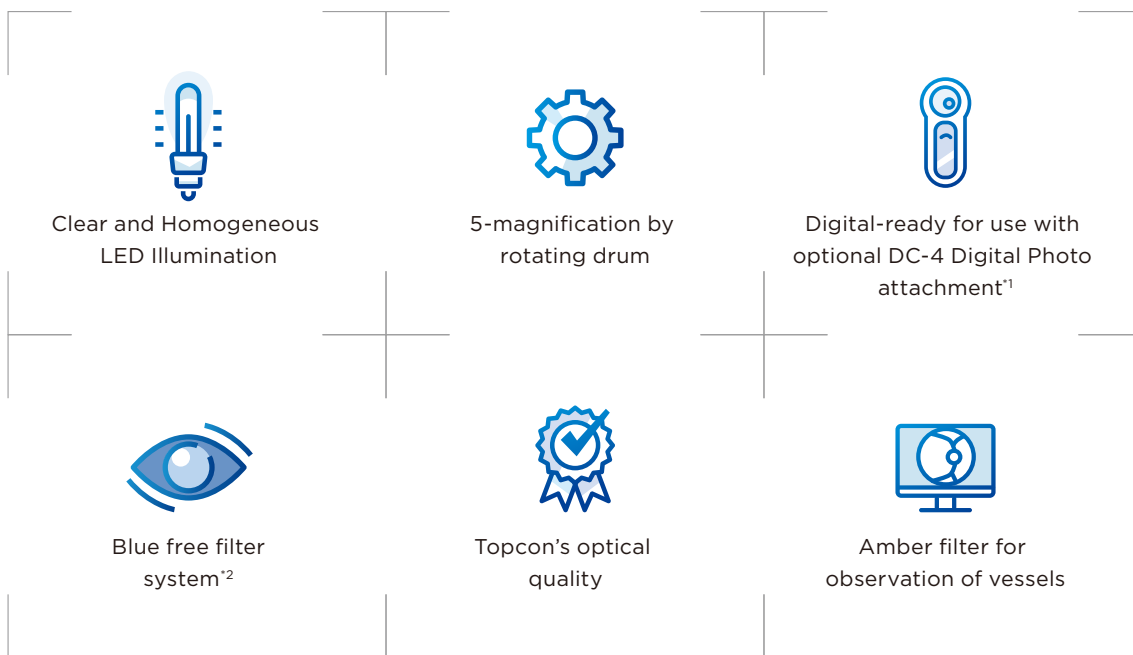


**Agung Santosa**  
 Area Sales Manager  
 08113219776



# SL-D4 LED SLIT LAMP

COMPACT, LED ILLUMINATION AND EASY TO USE



\*1 Optional accessory

\*2 Blue Free Filter System stands for the combination of the optional accessory  
YELLOW FILTER UNIT and the blue filter built-in SL-D4 (Type:LED)

Not for sale in the US.

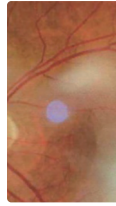


# SL-D4 LED

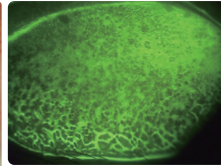
## SLIT LAMP



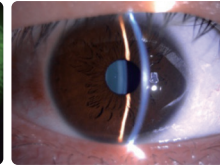
### Image Samples



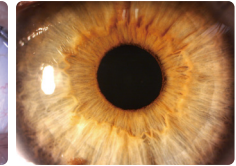
Amber filter



Blue Free Filter System<sup>2</sup>



Anterior



Iris

## Specifications

SL D4 LED		
Microscope	Magnification Selection	Drum, 5-step magnification
	Eyepiece	12.5x
	Magnification Ratio (Field of View)	6x (Φ35.1mm), 10x (Φ22.5mm), 16x (Φ14.1mm), 25x (Φ8.8mm), 40x (Φ8.8mm)
Slit Illumination	Slit Width	Continuous from 14mm to 0mm (at 14mm, slit becomes a circle)
	Slit Length	Continuous from 14mm to 1mm (at 14mm, slit becomes a circle)
	Slit Angle	0 to 180 degree with horizontal scanning capability
	Filters	Blue, Red-Free, Amber, UV Cut (Normal Use), IR Cut (Normal Use)
Base	Longitudinal Movement	90mm
	Lateral Movement	100mm
	Fine Base Movement	12mm
	Vertical Movement	30mm
Power	Input (Primary)	100 - 240V AC
	Frequency	50/60Hz
	Power Consumption	110VA
Chinrest	Vertical Movement	80mm
	Fixation Target <sup>*1</sup>	Red-LED
Dimensions/ Weight	w/ Table	550mm(W) x 399mm(D) x 558mm(H) / 17kg
	w/ Unit Table	440mm(W) x 379mm(D) x 558mm(H) / 16kg
	without Tabletop	329mm(W) x 375mm(D) x 450mm(H) / 11kg
	w/o Table and Chinrest	329mm(W) x 331mm(D) x 426 to 456mm(H) / 9.5kg
<b>DC-4<sup>*1</sup></b>		
System	Beam flux division by beam splitter	
Beam splitter	Operator side: 50%; Camera side: 50%	
Focus distance	35.7mm	
Image pickup device	1/2.5 type CMOS; Effective pixel number: 5.04 million pixels	
Power input	DC12V 2.4W	
Dimensions	76mm(W)×163mm(D)×304mm(H)	
Weight	430g	

\*1 Optional accessory

\*2 Blue Free Filter System stands for the combination of the optional accessory YELLOW FILTER UNIT and the blue filter built-in SL-D4 (Type:LED)

PRODUCT NAME: SLIT LAMP SL-D4 (Type:LED)

Not available for sale in all countries. Please check with your local distributor for availability in your country. Not for sale in the US.

**IMPORTANT** Subject to change in design and/or specifications without advanced notice. In order to obtain the best results with this instrument, please be sure to review all user instructions prior to operation.



**TOPCON MEDICAL SYSTEMS, INC.**  
101 Bauer Drive, Oakland, NJ 07436, U.S.A.  
Phone: +1-201-599-5100 Fax: +1-201-599-5250 www.topconmedical.com

**TOPCON HEALTHCARE SOLUTIONS, INC.**  
101 Bauer Drive, Oakland, NJ 07436, U.S.A.  
Phone: +1-201-599-5100 Fax: +1-201-599-5250 www.topconhealth.com

**TOPCON CANADA INC.**  
100 Provencher Avenue, Boisbriand, QC J7G 8N1 CANADA  
Phone: +1-450-430-7771 Fax: +1-450-430-6457 www.topcon.ca

**TOPCON SINGAPORE MEDICAL PTE. LTD.**  
1 JALAN KELANG TIMOR #09-01 PACIFIC TECH CENTRE SINGAPORE 59303  
Phone: +65-68720606 Fax: +65-67736150  
E-mail: medical\_sales@topcon.com.sg www.topcon.com.sg

REPRESENTATIVE OFFICE IN INDONESIA  
Level 38, Tower A, Kota Kasablanka unit G11-G4, Jl. Casablanca, Kay 88, Jakarta, Indonesia 12870  
Phone: +62-21-2963-8004

**TOPCON INSTRUMENTS (MALAYSIA) SDN.BHD.**  
No. 01, (Ground Floor), Jalan Excella 2, Off Jalan Ampang Putra,  
Taman Ampang Hillz, 55100 Kuala Lumpur, MALAYSIA  
Phone: +60-(0)3-42709866 Fax: +60-(0)3-42709766

**TOPCON INSTRUMENTS ( THAILAND ) CO.,LTD.**  
77/162 Sinsathorn Tower, 37th Floor, Krungthongburi Rd., Klongtoey,  
Klongsarn, Bangkok 10600, THAILAND  
Phone: +66-(0)2-440-1152-7 Fax: +66-(0)2-440-1158

**MEHRA EYETECH PRIVATE LIMITED**  
801 B Wing, Lotus Corporate Park, Graham Firth Steel Compound Goreang (East)  
Mumbai 400063 Maharashtra, INDIA  
Phone: +91-22-61285455 www.mehraeyetech.in

**TOPCON HEALTHCARE SOLUTIONS AP**  
8 Cross Street, #18-01 Manulife Tower, SINGAPORE 048424

**TOPCON (BEIJING) MEDICAL TECHNOLOGY CO., LTD.**  
Room 2808, Tower C, JinChangAn Building, No.82, Middle Section of East 4th Ring Road,  
Chaoyang District, Beijing 100124, P.R. CHINA  
+86-10-8794-5176

**TOPCON EUROPE MEDICAL B.V.**  
Essebaan 11; 2906 LJ Capelle a/d IJssel; P.O.Box 145;  
2900 AC Capelle a/d IJssel; THE NETHERLANDS  
Phone: +31-(0)10-4585077 Fax: +31-(0)10-4585045  
E-mail: medical@topcon.eu www.topcon-medical.eu

**ITALY OFFICE**  
Viale dell' Industria 60; 20037 Paderno Dugnano; (Milano); ITALY  
Phone: +39-02-9186671 Fax: +39-02-91081091 E-mail: info@topcon.it www.topcon.it

**DANMARK OFFICE**  
Præstemarkvej 25; 4000 Roskilde; DANMARK  
Phone: +45-46-327500 Fax: +45-46-327555  
E-mail: topcon@topcondanmark.dk www.topcondanmark.dk

**IRELAND OFFICE**  
Unit 276, Blanchardstown, Corporate Park 2 Ballycoolin Dublin 15, IRELAND  
Phone: +353-18975900 Fax: +353-18293915 E-mail: medical@topcon.ie www.topcon.ie

**TOPCON FRANCE MEDICAL S.A.S.**  
1 rue des Vergers, 69760 Limonest, FRANCE  
Phone: +33 (0) 437581940 E-mail: topcon@topcon.fr www.topcon.fr

**TOPCON DEUTSCHLAND MEDICAL G.m.b.H.**  
Hanns-Martin-Schleyer Strasse 4L; D-47877 Willich; GERMANY  
Phone: +49-(0)2154-8850 Fax: +49-(0)2154-885177 E-mail: med@topcon.de; www.topcon.de

**TOPCON SCANDINAVIA A.B.**  
Neorgatan 2; P.O.Box 25; 43151 Mölndal; SWEDEN  
Phone: +46-(0)31-7109200 Fax: +46-(0)31-7109249 E-mail: medical@topcon.se; www.topcon.se

**TOPCON ESPAÑA S.A.**  
HEAD OFFICE: Frederic Mompou 4 Esc. A Bajos 3, 08960 Sant Just Desvern Barcelona, SPAIN  
Phone: +34-93-4734057 Fax: +34-93-4733932 E-mail: medica@topcon.es; www.topcon.es

**TOPCON (GREAT BRITAIN) MEDICAL LTD.**  
Topcon House, Kennet Side, Bone Lane, Newbury, RG14 5PX U.K.  
Phone: +44-1635-551120 Fax: +44-1635-551170 E-mail: medical@topcon.co.uk; www.topcon.co.uk

**TOPCON POLSKA Sp. z o.o.**  
ul. Warszawska 23; 42-470 Siewierz, POLAND  
Phone: +48-(0)32-6705045 Fax: +48-(0)32-6715405 www.topcon-polska.pl

**TOPCON HEALTHCARE SOLUTIONS EMEA**  
Mäkelinmaku 42; 00100 Oulu; FINLAND  
Phone: +358-20-754-8100 www.topconhealth.com



## Specifications

Microscope unit		
Type	Galileo type	
Magnification	Drum, 5-step magnification	
Magnification steps	6/10/16/25/40	
Overall magnification (actual vision field)	6.37 (φ 35.1mm) 9.94 (φ 22.5mm) 15.87 (φ 14.1mm) 25.37 (φ 8.8mm) 39.62 (φ 5.6mm)	
Eyepiece lens	Magnification	12.5x
	Diopter adjustment range	-5D to +5D
Binocular tubes	PD adjustment: 55 to 78mm	
Illumination unit		
Illumination field	Slit width	0 to 14mm, can be altered gradually (14mm=circle)
	Slit length	14 to 1mm, can be altered gradually (14mm=circle)
	Aperture diameter	φ 14, 10, 5, 2, 1, 0.2 mm
Slit direction	Vertical to horizontal, can be altered gradually Inclination: 5° /10° /15° /20° Side swing	
Filter	Blue filter, red-free filter, amber filter, UV cut filter (normal use), IR cut filter (normal use), ND filter (13% transmission), exciter filter for slit lamp*, barrier filter for slit lamp*	
Illumination lamp	Halogen type:	12V, 30W
	LED type:	3A, 10W
Base unit		
Forward-backward movement	90mm	
Right-left movement	100mm	
Vertical movement	30mm	
Amount of movement in all directions	12mm	
Chinrest unit		
Amount of vertical movement of chinrest	80mm	
Fixation target **	Fixation target with diopter adjustment Luminous fixation target	
Fixation lamp	LED (Red)	
Other Specifications		
Dimensions	w/Table	550mm(W) x 420mm(D) x 752 to 782mm(H)
	w/ Unit Table	440mm(W) x 397mm(D) x 752 to 782mm(H)
	w/o Table	329mm(W) x 396mm(D) x 652 to 682mm(H)
	w/o Table and Chinrest	329mm(W) x 331(304)mm(D) x 652 to 682mm(H)
	Weight: w/Table	19kg
	w/ Unit Table	18kg
	w/o Table	13kg
	w/o Table and Chinrest	11.5kg
	Table size	550mm x 370mm
Unit Table size	440mm x 350mm	
Height from the top to patient's eye	375mm	
Power Supply	100-240V AC, 50-60Hz, 110VA	

\* A model with standard cobalt blue filter instead of the exciter/barrier filter combination is also available.  
\*\* A model without fixation target is also available.



\* Not available for sale in the United States.  
\* Not available in all countries, please check with your distributor for availability in your country  
\* Subject to change in design and/or specifications without advanced notice.

**IMPORTANT** In order to obtain the best results with this instrument, please be sure to review all user instructions prior to operation.



TOPCON CORPORATION

TOPCON CORPORATION

TOPCON CORPORATION

**TOPCON CORPORATION**  
CONNECTING VISIONS 75-1 Hasunuma-cho, Itabashi-ku, Tokyo 174-8580, Japan. Phone: 3-3558-2523/2522 Fax: 3-3965-6898 www.topcon.co.jp

**TOPCON MEDICAL SYSTEMS, INC.**  
111 Bauer Drive, Oakland, NJ 07436, U.S.A.  
Phone: +1-201-599-5100 Fax: +1-201-599-5250 www.topconmedical.com

**TOPCON MEDICAL LASER SYSTEMS, INC.**  
3130 Coronado Drive Santa Clara, California 95054 USA  
Phone: +1-408-235-8200 Phone: (USA only) +1-888-760-8657  
Fax: +1-408-235-8259 Email: tmlsinfo@topcon.com

**TOPCON CANADA INC.**  
110 Provencher Avenue, Boisbriand, QC J7G 1N1 CANADA  
Phone: +1-450-430-7771 Fax: +1-450-430-6457 www.topcon.ca

**TOPCON EUROPE MEDICAL B.V.**  
Esseboan 11; 2908 LJ Capelle a/d IJssel; P.O.Box 145;  
2900 AC Capelle a/d IJssel; THE NETHERLANDS  
Phone: +31-(0)10-4585077 Fax: +31-(0)10-4585045  
E-mail: medical@topcon.nl; www.topcon.eu

**ITALY OFFICE**  
Viale dell'Industria 60; 20037 Paderno Dugnano; (Milano), ITALY  
Phone: +39-02-9186671 Fax: +39-02-91081091 E-mail: topconitaly@tiscali.it; www.topcon.it

**DANMARK OFFICE**  
Praestemarksvej 25; 4000 Roskilde, DANMARK  
Phone: +45-46-327500 Fax: +45-46-327555  
E-mail: topcon@topcondanmark.dk www.topcondanmark.dk

**IRELAND OFFICE**  
Unit 276, Blanchardstown; Corporate Park 2 Ballycoolin Dublin 15, IRELAND  
Phone: +353-18975900 Fax: +353-18299915 E-mail: medical@topcon.ie; www.topcon.ie

**TOPCON S.A.R.L.**  
BAT A1 3 route de la roquette 93206 SAINT DENIS CEDEX  
Tel: +33 1 49 21 23 23 Fax: +33 1 49 21 23 24 E-mail: topcon@topcon.fr; www.topcon.fr

**TOPCON DEUTSCHLAND G.m.b.H.**  
Hanns-Martin-Schleyer Strasse 41; D-47877 Willich, GERMANY  
Phone: +49-(0)2154-8850 Fax: +49-(0)2154-885177 E-mail: med@topcon.de; www.topcon.de

**TOPCON SCANDINAVIA A.B.**  
Neogatan 2; P.O.Box 25; 43151 Mölndal, SWEDEN  
Phone: +46-(0)31-7109200 Fax: +46-(0)31-7109249 E-mail: medical@topcon.se; www.topcon.se

**TOPCON ESPAÑA S.A.**  
HEAD OFFICE  
Frederic Mompou 4 Esc. A Bajos 3, 08960 Sant Just Desvern Barcelona, SPAIN  
Phone: +34-93-4734057 Fax: +34-93-4733932 E-mail: medical@topcon.es; www.topcon.es

**TOPCON ( GREAT BRITAIN ) LTD.**  
Topcon House, Kennet Side, Bone Lane, Newbury Berkshire RG14 5PX United Kingdom  
Phone: +44-(0)1635-551120 Fax: +44-(0)1635-551170 E-mail: medical@topcon.co.uk; www.topcon.co.uk

**TOPCON POLSKA Sp. z o. o.**  
ul. Warszawska 23; 42-470 Siewierz, POLAND  
Phone: +48-(0)32-6705045 Fax: +48-(0)32-6713405 www.topcon-polska.pl

**TOPCON SINGAPORE MEDICAL PTE. LTD.**  
1 JALAN KILANG TIMOR #09-01 PACIFIC TECH CENTRE SINGAPORE 159303  
Phone: +65-68720606 Fax: +65-67736150 E-mail: medical\_sales@topcon.com.sg www.topcon.com.sg

**TOPCON INSTRUMENTS ( MALAYSIA ) SDN.BHD.**  
No. D1, (Ground Floor), Jalan Excella 2, Off Jalan Ampang Putra,  
Taman Ampang Hilir, 55100 Kuala Lumpur, MALAYSIA  
Phone: +60-(0)3-42709886 Fax: +60-(0)3-42709766

**TOPCON INSTRUMENTS ( THAILAND ) CO.,LTD.**  
77/162 Sinnaothorn Tower, 37th Floor, Krungthongburi Rd., Klongtongnai,  
Klongsam, Bangkok 10600, THAILAND  
Phone: +66-(0)2-440-1152-7 Fax: +66-(0)2-440-1158

**TOPCON CORPORATION BEIJING OFFICE**  
Block No.3, Kangding Street Beijing Economic-Technological Development Area,  
Beijing, 100176, CHINA  
Phone: +86-(0)10-6780-2799 Fax: +86-(0)10-6780-2790

**TOPCON CORPORATION SHANGHAI OFFICE**  
14L Huamin Empire Plaza, No.726, Yan-an Xi Road,  
Shanghai, 200050, CHINA  
Phone: +86-(0)21-5238-7722 Fax: +86-(0)21-5237-0761

**TOPCON CORPORATION BEIRUT OFFICE**  
P.O.Box 70-1002 Antelias, Beirut, LEBANON  
Phone: +961-4-523525/523526 Fax: +961-4-521119

**TOPCON CORPORATION DUBAI OFFICE**  
P.O.Box 293705, Dubai Airport Free Zone L.L.U. J-12, Dubai, U.A.E  
Phone: +971-4-299-5900 Fax: +971-4-299-5901

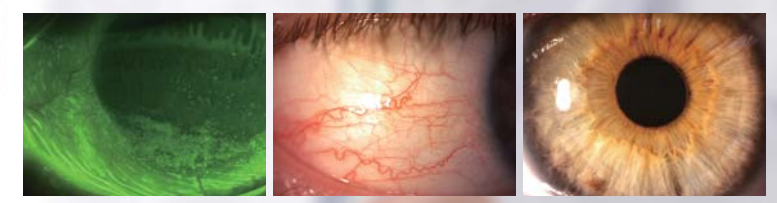
# Digital Slit Lamp SL-D701



SL-D701 with LED Light Source  
Sharp, Bright and  
Homogeneous Illumination



DC-4 Digital Camera  
High Resolution  
Seamless Integration  
Multiple Functions





# SL-D701

Digital Slit lamp

LED Light Source  
Sharp, Bright and Homogeneous Illumination



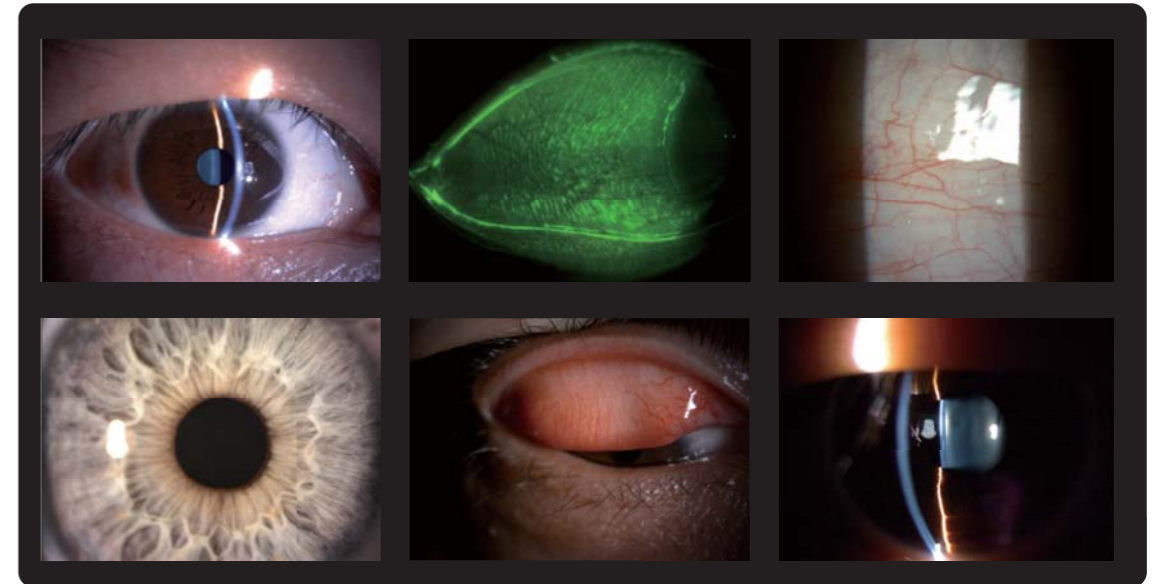
## Features

- » Available in LED and Halogen Light Source models\*
- » New DC-4 Digital Camera\*\*
  - High Resolution
  - Smart Capture Function
  - Still Image with Auto Exposure Function
  - Seamless Integration
- » Blue Free Filter™ System\*\* for Superior Fluorescent Viewing
- » Meibomian Gland Observation Capability\*\*

## Advantages & Benefits of LED

### LED Light Source

The new LED illumination source allows observation under a brighter, more homogeneous condition than the conventional halogen bulb source. The short wavelength of the LED spectrum lets the operator see minute details such as flare in the anterior chamber and vitreous. Color temperature remains uniform when adjusting light intensity insuring consistent viewing results throughout the entire eye's optical path.

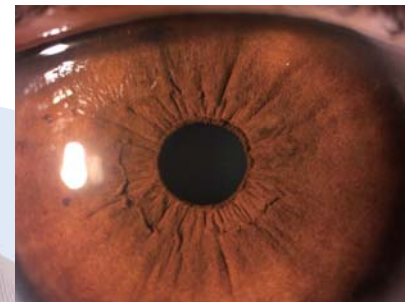
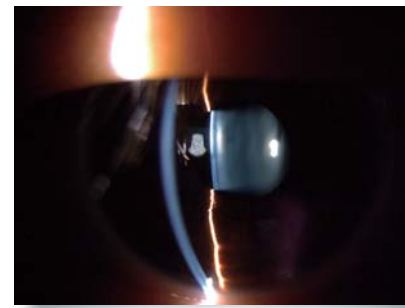


### Advantages of LED Illumination

- ✓ Brighter illumination enhances observation of the eye structures
- ✓ LED wavelength characteristics allow for easy visualization of subtle details such as flare and inflammation
- ✓ Consistent color temperature throughout the entire intensity adjustment
- ✓ Substantial reduction in bulb replacement
- ✓ Energy efficient and cost saving







## DC-4 Digital Camera

### Exclusive from Topcon

#### Smart Capture Function

With a simple push of the joystick trigger the operator can obtain a rapid series of images that are quickly saved for later revision and selection. The Smart Capture function minimizes failed images or blurry pictures, especially in children and non-cooperative patients.

#### Still Image with Auto Exposure (AE) Function

By adjusting the shutter speed and sensor gain, the brightness of the image will be automatically compensated. As a result the live image used for alignment and the final picture will have the same color balance.

#### Live View

When using the EZ Capture software in conjunction with the DC-4, a real time live image will be seen on the monitor to facilitate centering and focusing. The live image can be used to show the eye condition to third party individuals for teaching and education. Sensitivity, shutter speed and white balance can be adjusted from the computer.

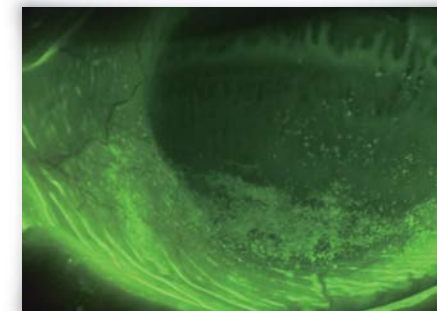
#### Video Capability

The DC-4 allows for easy acquisition of video clips of the eye movements without interfering with the examination.

#### Blue Free Filter™ System

Topcon Blue Free Filter observation can be carried out using the exciter filter for slit lamp and barrier filter for slit lamp. Tear flow details and scars can be clearly viewed with less glare or pooling.

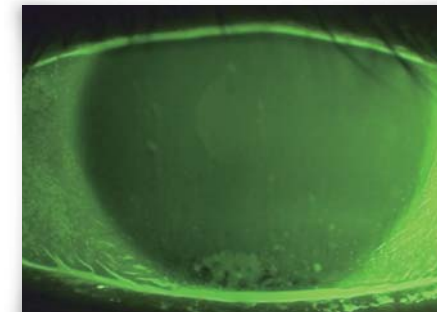
\*Images provided by Toru Noda, MD, PhD, Department of Ophthalmology, Tokyo Medical Center



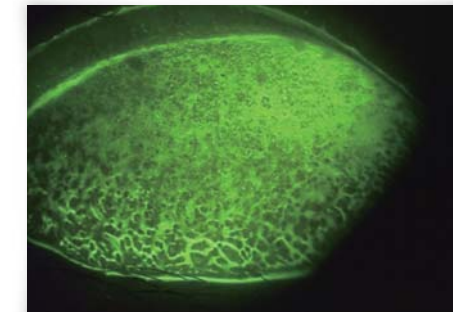
Blue Free Filter™



Cobalt Blue Filter



Blue Free Filter™



Blue Free Filter™

#### Amber Filter

A warmer, more pleasant tone of the skin and eye structures can be obtained by inserting the amber filter. This color correction filter produces a pleasant coloration that is especially useful in slit lamp imaging.

Amber



Non Amber



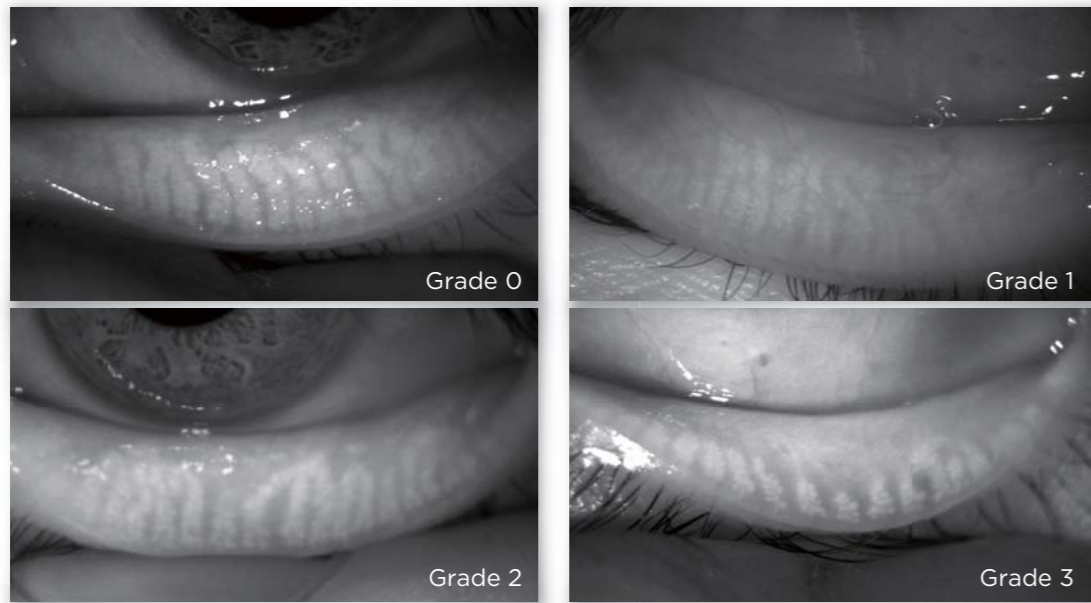


## Meibomian Gland Observation \*

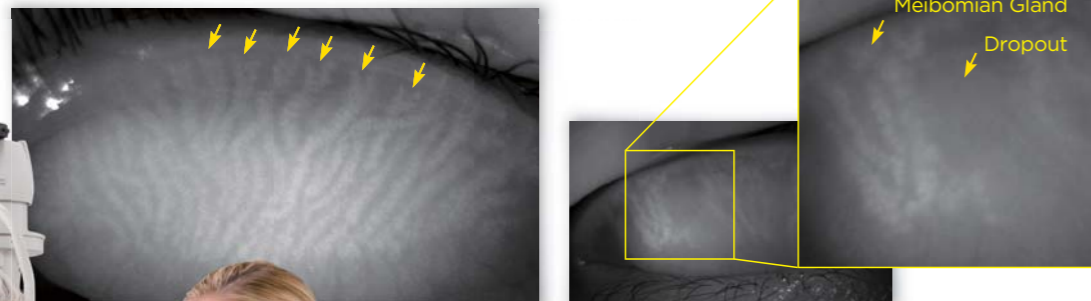
Meibomian gland observation can be performed and documented using the optional meibomian gland observation system. Because of the high resolution of the DC-4, fine detail of glandular acinus and subtle changes of meibomian glands can be seen and photographed for a better understanding of its condition.

\* With a combination of SL-D701 + DC-4 (Option)+ BG-5(Optional)

### Meiboscore: Grade 0 ~ 3



### Meibomian Gland Close-up!



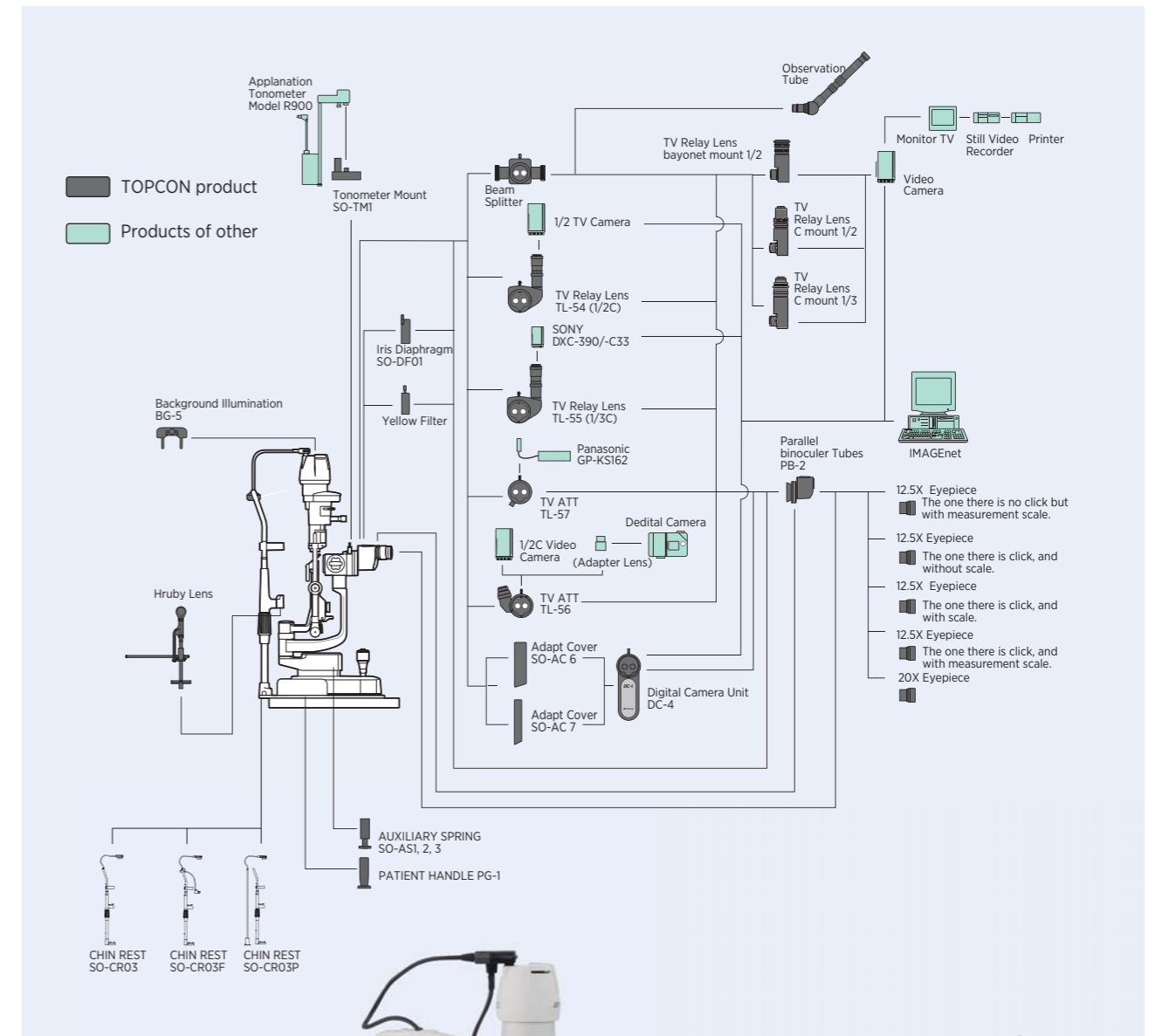
\*Images and meiboscore provided by: Reiko Arita, MD, PhD, Itoh Clinic, Department Ophthalmology, the University of Tokyo School of Medicine

### Right / Left Eye Indicator

When in photography mode, the SL-D701 automatically recognizes the patient's right and left eye, simplifying the photographic procedure.

### More Than Just the Basic Function

Versatile lens coatings, including a preservative layer, and the use of apochromatic optics enhance the observation and require less maintenance.



## SL-D701 Digital Slit Lamp



\*Shown with optional DC-4 digital attachment, optional handle bars and optional electric table.